



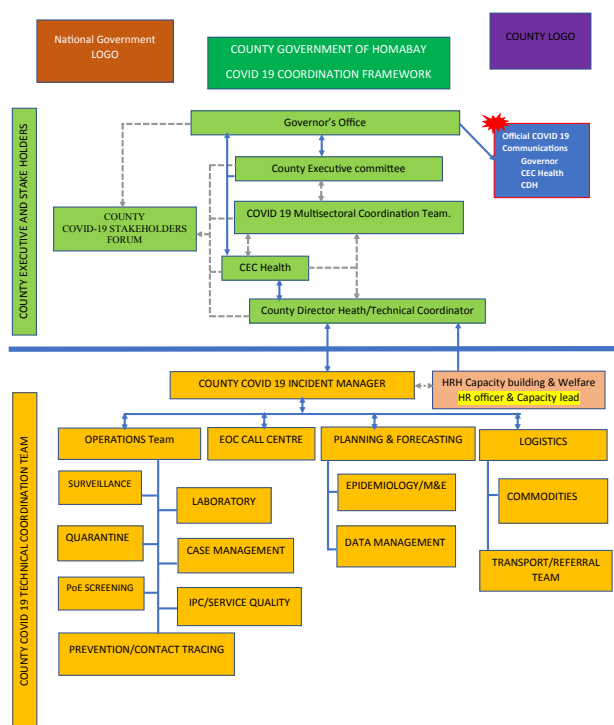
COUNCIL OF GOVERNORS



# COUNTY COVID RESPONSE REPORT

Visit <https://maarifa.cog.go.ke/county-initiatives> to learn more about the successful COVID-19 response initiatives our Counties are undertaking.

## Homa Bay's Harmonised COVID-19 Coordination Framework enhances timely interventions and accountability

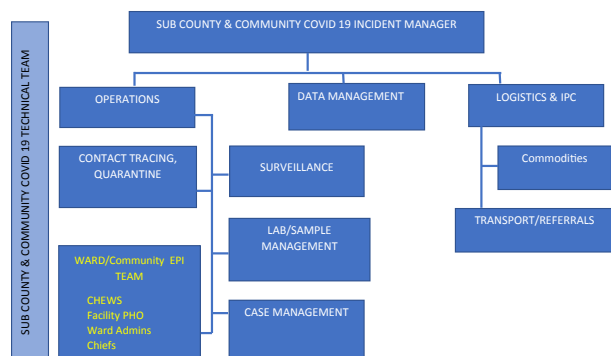


**Governor Awiti receiving equipment for the isolation facilities from the suppliers**

### ESSENTIAL HOMA BAY COUNTY COVID-19 RESPONSE CONTACTS

Name	Responsibility	Contact
	Coordination	
	Incident Manager	
	Operations	
	Planning and Forecasting	
	Response Call Centre	
	Surveillance	
	Laboratory	
	Referrals	
	Commodities	
	Disaster	

### SUB COUNTY IMS STRUCTURE



### SUB COUNTY/COMMUNITY COVID-19 RESPONSE CONTACTS

Name	Responsibility	Contact
	Incident Manager	
	Contact tracking/Quarantine	
	Case management	
	Logistics and IPC	
	Community health prevention	

In kicking off its preparedness and response to the COVID-19 pandemic, the County Government of Homa Bay came up with an operations structure for special assignments, separate from the normal assignments in an inverted pyramid with different teams handling specific tasks. This while guaranteeing speedy response due to clear roles and responsibilities ensures more respect than in normal structures. In the Homa Bay structure (on the left), Green is for the policy team comprising the County Executive and primary stakeholders such as the County Commissioner; Yellow is for the technical team, and Blue is for the Sub-county and community teams. The County has so far enjoyed strong and effective coordination with the national government, development partners, volunteers, well-wishers, and the community. It has achieved the 300-bed capacity, among other successes. Counties that are facing coordination and accountability challenges can adapt the framework to their contexts, instead of reinventing the wheel.